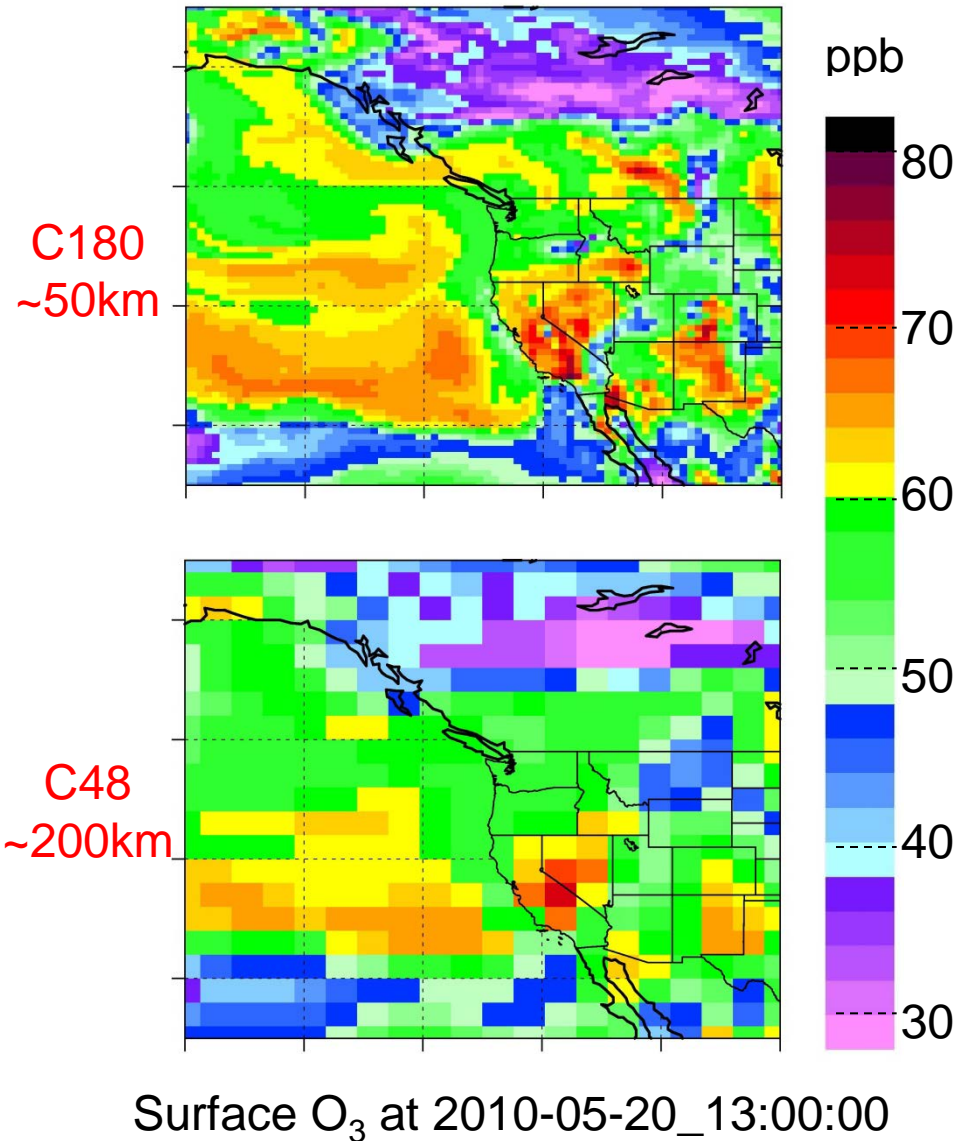


# Boundary conditions from the GFDL AM3 global model (Meiyun.Lin@noaa.gov)



- **General Description** [Lin et al., 2012a,b]
  - Full strat & trop chem
  - Nudged to NCEP or GFS winds
- **HTAP2 experiments**
  - Coarse-res run for 2007-2010
  - High-res run for 2010
  - Base and perturbation runs for four northern midlatitude source regions
- **Emissions**
  - HTAP v2
  - FINN daily resolved fire emissions (optional to use GFED v3)
  - MEGAN isoprene
- **Additional Diagnostics**
  - Regional CO tracers
  - Stratospheric ozone tracer
  - Natural vs. anthropogenic dust

# The GFDL AM3 model has been extensively evaluated during the 2010 NOAA CalNex campaign

